



# TURNER ENGLISH COLLEGE 2022/2023 INTAKE

CRICOS Code 03472K

# COURSE OPTIONS

## PTE Preparation

CRICOS CODE: 093151D

## IELTS Preparation

CRICOS CODE: 090603E

## General English

CRICOS CODE: 095818E

## High School Preparation

CRICOS CODE: 095420E

# COURSE DETAILS

All fees are in Australian Dollars (\$AUD).

|  | Duration          | Course Fee     |
|--|-------------------|----------------|
| <b>CRICOS Courses</b>                                  |                   |                |
| <b>PTE Preparation</b><br>CRICOS CODE: 093151D         | <b>1-12 Weeks</b> | \$380 per week |
| <b>IELTS Preparation</b><br>CRICOS CODE: 090603E       | <b>5-45 Weeks</b> | \$380 per week |
| <b>General English</b><br>CRICOS CODE: 095818E         | <b>5-44 Weeks</b> | \$380 per week |
| <b>High School Preparation</b><br>CRICOS CODE: 095420E | <b>5-44 Weeks</b> | \$380 per week |

\* Enrolment Fee \$250 AUD \* Online Access Fee (Material Fee) is charged at \$15 AUD per week

## Class Timings

**Morning Class (Sample Timetable)** General English: Beginner & Intermediate; High School Preparation

|                   | MONDAY           | TUESDAY               | WEDNESDAY          | THURSDAY           |
|-------------------|------------------|-----------------------|--------------------|--------------------|
| <b>9:30-11:00</b> | Reading Recovery | Group Reading + Vocab | Poodl Sol          | Listening + Assign |
| <b>11:15-1:15</b> | Tech Time        | Grammar & Essay       | Grammar and Letter | TSI + Journal      |
| <b>1:30-3:00</b>  | Daily Dialogue   | Daily Dialogue        | School Excursions  | Songs + Graduation |

**Afternoon Class (Sample Timetable)** General English: Intermediate & Advanced; IELTS Preparation; PTE Preparation

|                  | MONDAY           | TUESDAY               | WEDNESDAY          | THURSDAY           |
|------------------|------------------|-----------------------|--------------------|--------------------|
| <b>1:30-3:00</b> | Daily Dialogue   | Daily Dialogue        | School Excursions  | Songs + Graduation |
| <b>3:15-5:15</b> | Tech Time        | Grammar & Essay       | Grammar and Letter | TSI + Journal      |
| <b>5:30-7:00</b> | Reading Recovery | Group Reading + Vocab | Poodl Sol          | Listening + Assign |



# 2022/2023 START DATES

*Intakes Every Monday*

## SCHOOL CALENDAR 2022



*Students can start every Monday.*

| JANUARY   | FEBRUARY  | MARCH   | APRIL   | MAY   | JUNE  |
|---|---|---|---|---|---|
| 1<br>2<br>3<br>4<br>5<br>6<br>7<br>8<br>9<br>10<br>11<br>12<br>13<br>14<br>15<br>16<br>17<br>18<br>19<br>20<br>21<br>22<br>23<br>24<br>25<br>26<br>27<br>28<br>29<br>30<br>31 | 1<br>2<br>3<br>4<br>5<br>6<br>7<br>8<br>9<br>10<br>11<br>12<br>13<br>14<br>15<br>16<br>17<br>18<br>19<br>20<br>21<br>22<br>23<br>24<br>25<br>26<br>27<br>28                   | 1<br>2<br>3<br>4<br>5<br>6<br>7<br>8<br>9<br>10<br>11<br>12<br>13<br>14<br>15<br>16<br>17<br>18<br>19<br>20<br>21<br>22<br>23<br>24<br>25<br>26<br>27<br>28<br>29<br>30<br>31 | 1<br>2<br>3<br>4<br>5<br>6<br>7<br>8<br>9<br>10<br>11<br>12<br>13<br>14<br>15<br>16<br>17<br>18<br>19<br>20<br>21<br>22<br>23<br>24<br>25<br>26<br>27<br>28<br>29<br>30       | 1<br>2<br>3<br>4<br>5<br>6<br>7<br>8<br>9<br>10<br>11<br>12<br>13<br>14<br>15<br>16<br>17<br>18<br>19<br>20<br>21<br>22<br>23<br>24<br>25<br>26<br>27<br>28<br>29<br>30<br>31 | 1<br>2<br>3<br>4<br>5<br>6<br>7<br>8<br>9<br>10<br>11<br>12<br>13<br>14<br>15<br>16<br>17<br>18<br>19<br>20<br>21<br>22<br>23<br>24<br>25<br>26<br>27<br>28<br>29<br>30       |
| JULY  | AUGUST  | SEPTEMBER   | OCTOBER   | NOVEMBER  | DECEMBER  |
| 1<br>2<br>3<br>4<br>5<br>6<br>7<br>8<br>9<br>10<br>11<br>12<br>13<br>14<br>15<br>16<br>17<br>18<br>19<br>20<br>21<br>22<br>23<br>24<br>25<br>26<br>27<br>28<br>29<br>30<br>31 | 1<br>2<br>3<br>4<br>5<br>6<br>7<br>8<br>9<br>10<br>11<br>12<br>13<br>14<br>15<br>16<br>17<br>18<br>19<br>20<br>21<br>22<br>23<br>24<br>25<br>26<br>27<br>28<br>29<br>30<br>31 | 1<br>2<br>3<br>4<br>5<br>6<br>7<br>8<br>9<br>10<br>11<br>12<br>13<br>14<br>15<br>16<br>17<br>18<br>19<br>20<br>21<br>22<br>23<br>24<br>25<br>26<br>27<br>28<br>29<br>30       | 1<br>2<br>3<br>4<br>5<br>6<br>7<br>8<br>9<br>10<br>11<br>12<br>13<br>14<br>15<br>16<br>17<br>18<br>19<br>20<br>21<br>22<br>23<br>24<br>25<br>26<br>27<br>28<br>29<br>30<br>31 | 1<br>2<br>3<br>4<br>5<br>6<br>7<br>8<br>9<br>10<br>11<br>12<br>13<br>14<br>15<br>16<br>17<br>18<br>19<br>20<br>21<br>22<br>23<br>24<br>25<br>26<br>27<br>28<br>29<br>30       | 1<br>2<br>3<br>4<br>5<br>6<br>7<br>8<br>9<br>10<br>11<br>12<br>13<br>14<br>15<br>16<br>17<br>18<br>19<br>20<br>21<br>22<br>23<br>24<br>25<br>26<br>27<br>28<br>29<br>30<br>31 |

### Suggested Intake Dates-2022

- 1st Intake 17th of January (9 wks)
- 2nd Intake 21st of March (10 wks)
- 3rd Intake 6th of June (10 wks)
- 4th Intake 22nd of August (10 wks)
- 5th Intake 14th of November (5 wks)

### School Breaks

- 3rd-14th of January
- 14th of March - Labour Day
- 25th of April - Anzac Day
- 13th-17th of June
- 1st of November - Melbourne Cup
- 16th of December-End of Year

### Aussie Exploration Weeks

- 26th-30th of September
- 7th-11st of November
- 7th-11st of November
- Check our website for latest updates.

### Special Event Days

Check our website for latest updates  
[turnerenglish.com.au/school-dates/](http://turnerenglish.com.au/school-dates/)

**Australia's No. 1**  
Aussie English & Culture School

## SCHOOL CALENDAR 2023



*Students can start every Monday.*

| JANUARY   | FEBRUARY  | MARCH   | APRIL   | MAY   | JUNE  |
|---|---|---|---|---|---|
| 1<br>2<br>3<br>4<br>5<br>6<br>7<br>8<br>9<br>10<br>11<br>12<br>13<br>14<br>15<br>16<br>17<br>18<br>19<br>20<br>21<br>22<br>23<br>24<br>25<br>26<br>27<br>28<br>29<br>30<br>31 | 1<br>2<br>3<br>4<br>5<br>6<br>7<br>8<br>9<br>10<br>11<br>12<br>13<br>14<br>15<br>16<br>17<br>18<br>19<br>20<br>21<br>22<br>23<br>24<br>25<br>26<br>27<br>28                   | 1<br>2<br>3<br>4<br>5<br>6<br>7<br>8<br>9<br>10<br>11<br>12<br>13<br>14<br>15<br>16<br>17<br>18<br>19<br>20<br>21<br>22<br>23<br>24<br>25<br>26<br>27<br>28<br>29<br>30<br>31 | 1<br>2<br>3<br>4<br>5<br>6<br>7<br>8<br>9<br>10<br>11<br>12<br>13<br>14<br>15<br>16<br>17<br>18<br>19<br>20<br>21<br>22<br>23<br>24<br>25<br>26<br>27<br>28<br>29<br>30       | 1<br>2<br>3<br>4<br>5<br>6<br>7<br>8<br>9<br>10<br>11<br>12<br>13<br>14<br>15<br>16<br>17<br>18<br>19<br>20<br>21<br>22<br>23<br>24<br>25<br>26<br>27<br>28<br>29<br>30<br>31 | 1<br>2<br>3<br>4<br>5<br>6<br>7<br>8<br>9<br>10<br>11<br>12<br>13<br>14<br>15<br>16<br>17<br>18<br>19<br>20<br>21<br>22<br>23<br>24<br>25<br>26<br>27<br>28<br>29<br>30       |
| JULY  | AUGUST  | SEPTEMBER   | OCTOBER   | NOVEMBER  | DECEMBER  |
| 1<br>2<br>3<br>4<br>5<br>6<br>7<br>8<br>9<br>10<br>11<br>12<br>13<br>14<br>15<br>16<br>17<br>18<br>19<br>20<br>21<br>22<br>23<br>24<br>25<br>26<br>27<br>28<br>29<br>30<br>31 | 1<br>2<br>3<br>4<br>5<br>6<br>7<br>8<br>9<br>10<br>11<br>12<br>13<br>14<br>15<br>16<br>17<br>18<br>19<br>20<br>21<br>22<br>23<br>24<br>25<br>26<br>27<br>28<br>29<br>30<br>31 | 1<br>2<br>3<br>4<br>5<br>6<br>7<br>8<br>9<br>10<br>11<br>12<br>13<br>14<br>15<br>16<br>17<br>18<br>19<br>20<br>21<br>22<br>23<br>24<br>25<br>26<br>27<br>28<br>29<br>30       | 1<br>2<br>3<br>4<br>5<br>6<br>7<br>8<br>9<br>10<br>11<br>12<br>13<br>14<br>15<br>16<br>17<br>18<br>19<br>20<br>21<br>22<br>23<br>24<br>25<br>26<br>27<br>28<br>29<br>30<br>31 | 1<br>2<br>3<br>4<br>5<br>6<br>7<br>8<br>9<br>10<br>11<br>12<br>13<br>14<br>15<br>16<br>17<br>18<br>19<br>20<br>21<br>22<br>23<br>24<br>25<br>26<br>27<br>28<br>29<br>30       | 1<br>2<br>3<br>4<br>5<br>6<br>7<br>8<br>9<br>10<br>11<br>12<br>13<br>14<br>15<br>16<br>17<br>18<br>19<br>20<br>21<br>22<br>23<br>24<br>25<br>26<br>27<br>28<br>29<br>30<br>31 |

### Suggested Intake Dates-2023

- 1st Intake 16th of January
- 2nd Intake 17th of April
- 3rd Intake 17th of July
- 4th Intake 9th of October

### School Breaks

- 1st-14th of January
- 25th of December-End of Year
- 26th of January
- 13th of March - Labour Day
- 25th of April - Anzac Day
- 12nd-16th of June
- 7th of November - Melbourne Cup

### Aussie Exploration Weeks

- 20th-24th of February
- 13th-17th of November
- 3rd-6th of April
- Check our website for latest updates.
- 22nd-26th of May
- 10th-14th of July
- 21st-25th of August
- 2nd-6th of October

### Special Event Days

Check our website for latest updates  
[turnerenglish.com.au/school-dates/](http://turnerenglish.com.au/school-dates/)

**Australia's No. 1**  
Aussie English & Culture School

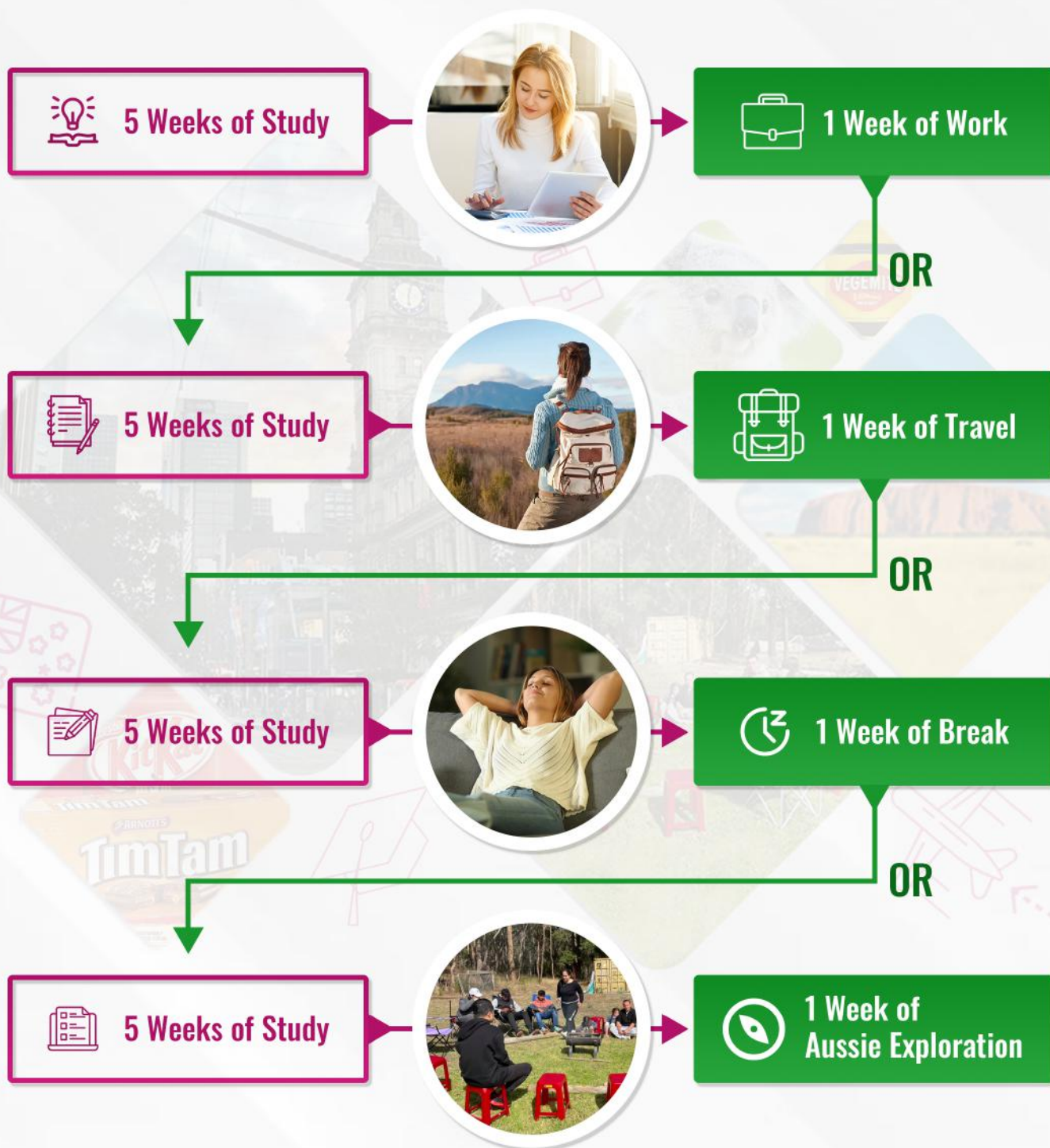




# Need A Break?

BREAKS, HOLIDAYS, EXCURSIONS

Turner English offers optional excursions + trips every 5 weeks of study. During these times, students can **choose to work, travel, break or attend our excursions**. Some excursions over the past few years included: Kingslake 2-Day Camping Trip, Snow trip at Mt. Baw Baw, Turner English Annual English Festival at Warrandyte campsite and our 3-Day Trip to Sydney.





## A message from the owner, **Nerada Turner.**

I'll just start with a short story about why I started Turner English.

When I was 14, I was a high school drop out. I was on a very dark and dangerous path to no man's land.

It wasn't until I was 25, 10 years later that I regained the insight to go back to school and continue my education.

The first year I went back, I failed miserably again. So I tried again and the second year I managed to scrape a pass and go to university.

To cut a long story short it took five years for me to graduate with a Master of Teaching Degree from The University of Sydney and in my final year I received straight HD's.

So the message is this, anyone can turn their life around through a good education. It's never too late and persistence and patience are key.

Let me walk with you on your journey at Turner.

### **Turner English facilities and resources**

Turner English is equipped with all the resources and facilities required to successfully undertake your program including charging stations, software, lounge, breakout rooms and Learning Centre. It is a requirement of Turner to bring your own laptop (device) to enhance your experience as we are an environmentally friendly green campus and therefore paperless.

All course resources are available during your online study on your personal login to your portal. Students can track their progress and academic success through the portal. Students can extend access and their student experience through their portal for a small fee after their course finishes.

### **Course completion**

Students who successfully participate and complete the course and assessments, will receive a Certificate of Completion and Certificate of Attendance. The certificates can be used for further studies or applying for VET courses, RTO's and high school.

### **Our teaching methodologies**

Turner English uses innovative and collaborative teaching methodologies as the bedrock of their curriculum. As a consequence, students will learn English as they would in a leading Australian high school or primary school rather than a traditional English language college. Students can expect to have a high focus on reading and understanding as the bedrock of their studies. Students have reported increasing their reading speed by up to 10 times after the completion of a Turner English college course. For the beginners, students will be reading fluently, seamlessly and confidently as the course progresses.

### **Australia focus**

Turner English courses, no doubt, have an academic focus. However, as an integrated cultural benefit, we have made sure to utilise and integrate the Australian environment as much as possible. Students can expect weekly excursions and outings that are integrated and embedded into their course curriculum, assignments and homework.

### **Numeracy**

In order to build resilient students for the ever-changing workforce of the future, it is important that numeracy skills are retouched. A lot of students after they finish school do not concentrate or improve their numeracy skills and Turner English has made sure not to neglect this area. However, it's important to be able to express yourself and apply the skills in every day living. You would be surprised at how much English is involved in a mathematics lesson.

### **Additional Services**

Turner English can organise friendly homestay accommodation for you. We also have a airport pick up and drop off if you'd like a friendly greeting when you arrive. Please talk to your agent regarding extra services. Places are limited.



**90% of Australians are now VACCINATED! Borders are open to vaccinated travellers.**  
Our plans are linked to the vaccination rollout in Australia and low-risk overseas markets.

#### **Contact Us:**

✉ [turnerenrolments@gmail.com](mailto:turnerenrolments@gmail.com)

☎ +61 (0422 480 720)

🌐 [www.turnerenglish.com.au](http://www.turnerenglish.com.au)